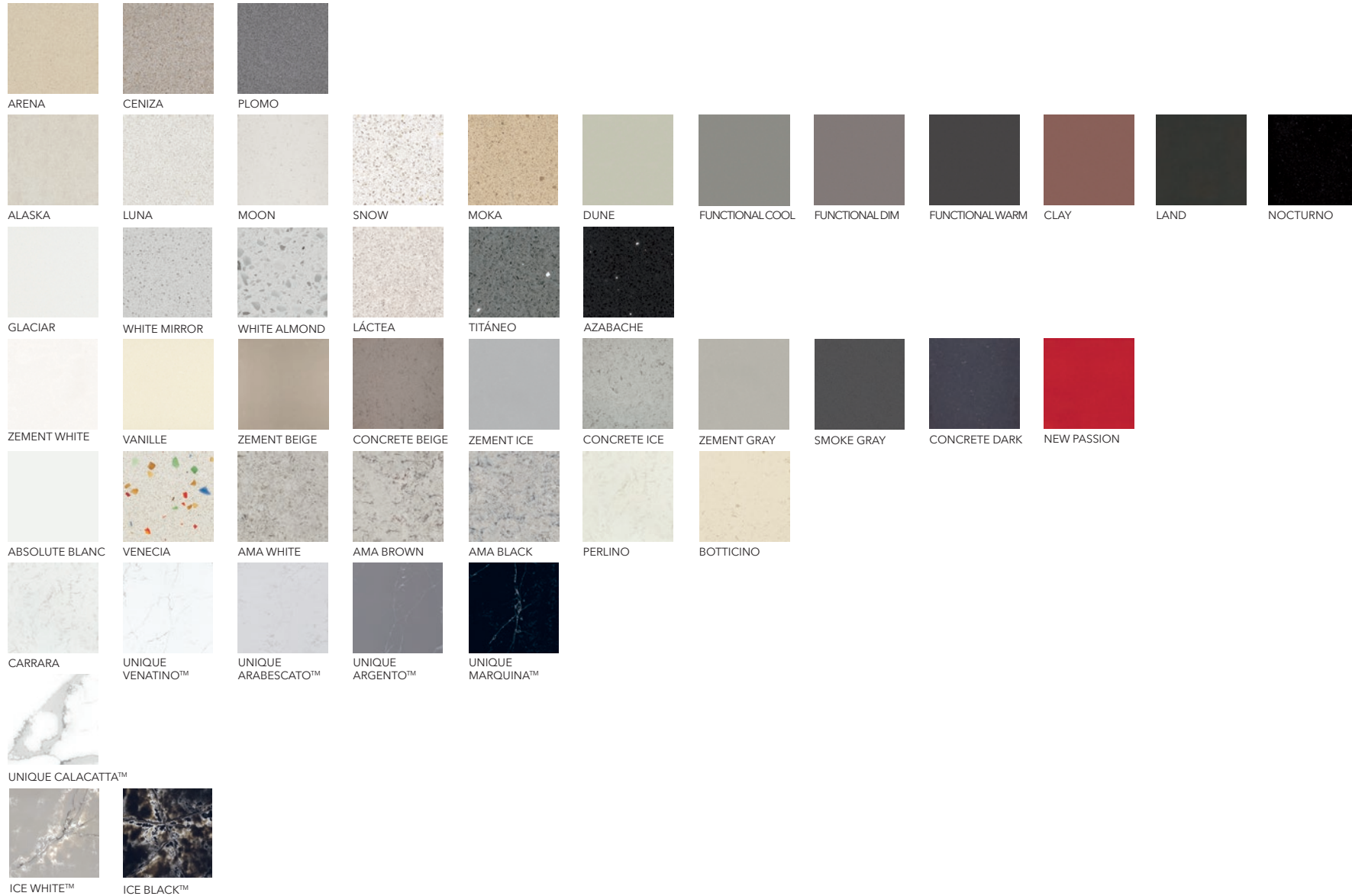




PORTFOLIO INTERNATIONAL / ENG

COMPAC
THE SURFACES COMPANY

Design



Features

	FINISHES		THICKNESSES		SLAB SIZE	
ABSOLUTE BLANC	P	G	■		□	■
ALASKA	P		■		□	
AMA BLACK	P			□	□	
AMA BROWN	P			□	□	
AMA WHITE	P			□	□	
ARENA	P		■		□	
AZABACHE	P		■		□	
BOTTICINO	P	G	■		□	
CARRARA	P	G	■		□	■
CENIZA	P		■		□	■
CLAY	P	G	■		□	
CONCRETE BEIGE			C	□	□	
CONCRETE DARK			C	□	□	
CONCRETE ICE			C	□	□	
DUNE	P	G	■		□	

	FINISHES		THICKNESSES		SLAB SIZE	
FUNCTIONAL COOL	P	G	■		□	
FUNCTIONAL DIM	P	G	■		□	
FUNCTIONAL WARM	P	G	■		□	
GLACIAR	P		■		□	■
ICE BLACK™	P	G		▣		■
ICE WHITE™	P	G		▣		■
LACTEA	P		■		□	
LAND	P	G	■		□	
LUNA	P		■		□	■
MOKA	P		■		□	
MOON	P		■		□	■
NEW PASSION	P		■		□	
NOCTURNO	P		■		□	
PERLINO	P	G	■		□	
PLOMO	P		■		□	■

	FINISHES		THICKNESSES		SLAB SIZE	
SMOKE GRAY	P		■		□	
SNOW	P		■		□	■
TITANEO	P		■		□	
UNIQUE ARABESCATO™	P	G		□		■
UNIQUE ARGENTO™	P	G		□		■
UNIQUE CALACATTA™	P	G		□		■
UNIQUE MARQUINA™	P	G		□		■
UNIQUE VENATINO™	P	G		□		■
VANILLE	P		■		□	
VENECIA	P		■		□	
WHITE ALMOND	P			□	□	
WHITE MIRROR	P			□	□	
ZEMENT BEIGE		G		□	□	
ZEMENT GRAY		G		□	□	
ZEMENT ICE		G		□	□	
ZEMENT WHITE		G		□	□	

- P** POLISHED
- G** GLACÉ
- C** CONCRETE

- All thicknesses: 12mm, 20mm and 30 mm
- Only available in 20 mm and 30 mm thicknesses
- ▣ Only available in 20 mm thicknesses

□ Standar Slab

■ Giant Slab
Available in 20 mm or 30 mm thickness.
Check price list.

DESIGN AVAILABLE IN 12MM

ABSOLUT BLANC
ALASKA
ARENA
AZABACHE
BOTTICINO
CARRARA
CENIZA

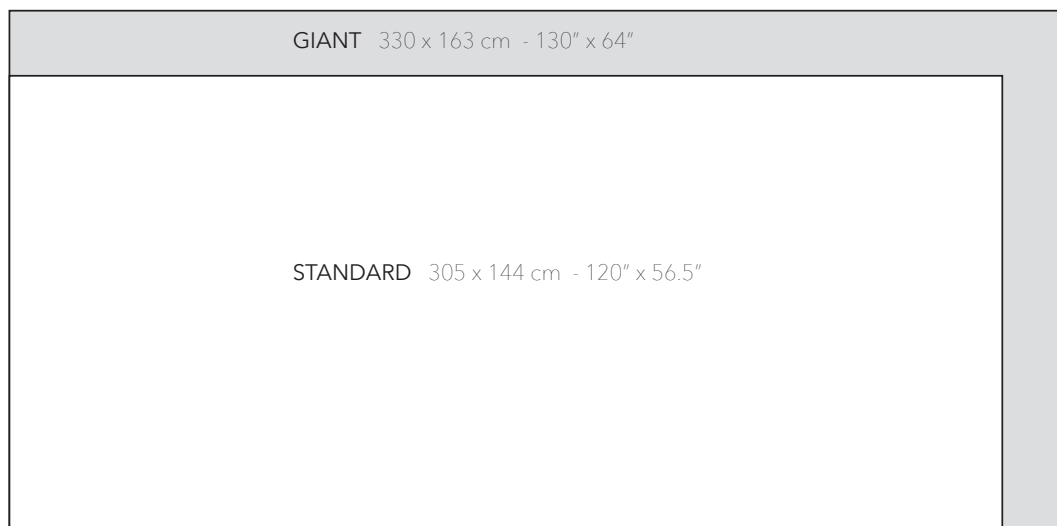
CLAY
DUNE
FUNCTIONAL COOL
FUNCTIONAL DIM
FUNCTIONAL WARM
GLACIAR
LACTEA

LAND
LUNA
MOKA
MOON
NEW PASSION
NOCTURNO
PERLINO

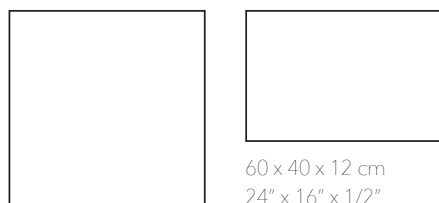
PLOMO
SMOKE GRAY
SNOW
TITANEO
VANILLE
VENECIA

Sizes

Standard sizes*



Standard tiles sizes**



60 x 60 x 12 cm
24" x 24" x 1/2"



60 x 30 x 12 cm
24" x 12" x 1/2"



30 x 30 x 12 cm
12" x 12" x 1/2"

Thicknesses



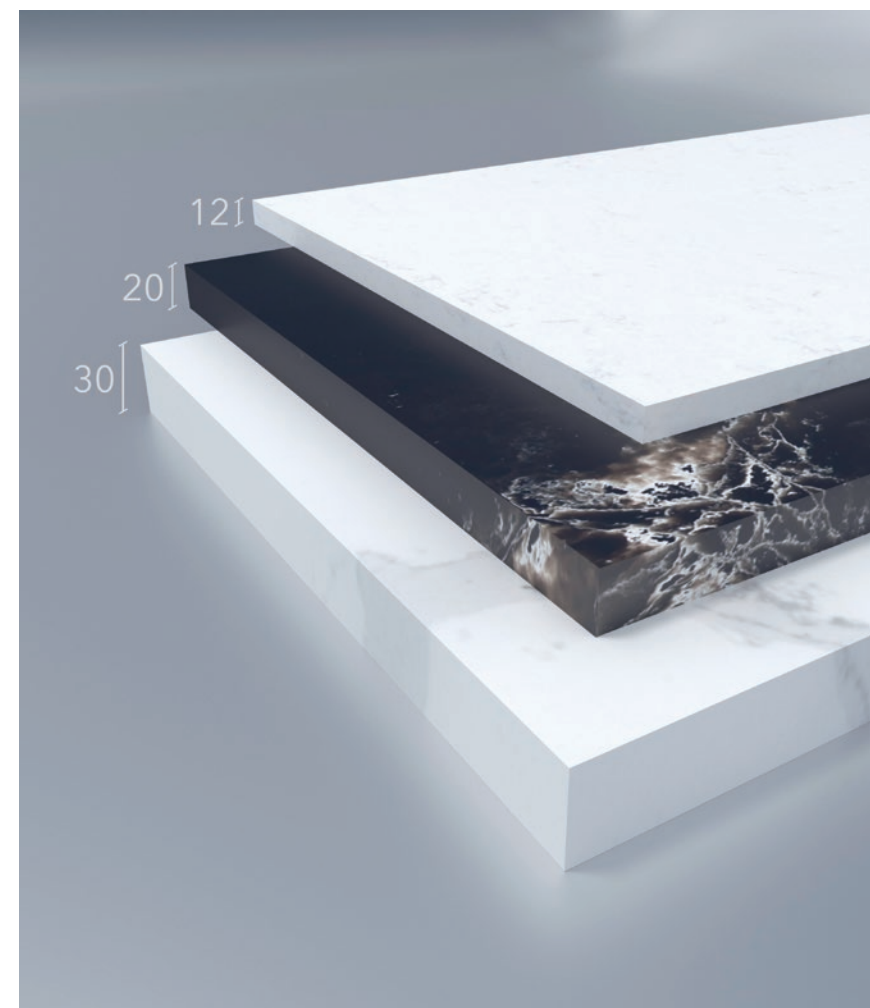
12 mm - 1/2"



20 mm - 3/4"



30 mm - 1 1/4"



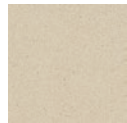
* Tolerance ± 1 cm.

** Special sizes and thicknesses upon request.

GENERAL DESIGNS

PORTFOLIO INTERNATIONAL

General Design



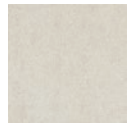
ARENA



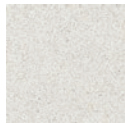
CENIZA



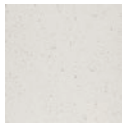
PLOMO



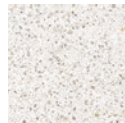
ALASKA



LUNA



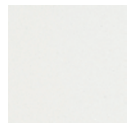
MOON



SNOW



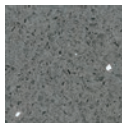
NOCTURNO



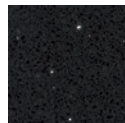
GLACIAR



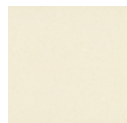
LÁCTEA



TITÁNEO



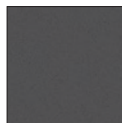
AZABACHE



VANILLE



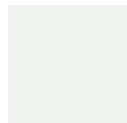
ZEMENT ICE



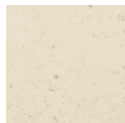
SMOKE GRAY



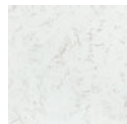
NEW PASSION



ABSOLUTE BLANC



BOTTICINO



CARRARA



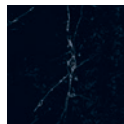
UNIQUE VENATINO™



UNIQUE ARABESCATO™



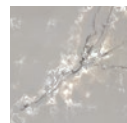
UNIQUE ARGENTO™



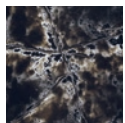
UNIQUE MARQUINA™



UNIQUE CALACATTA™



ICE WHITE™

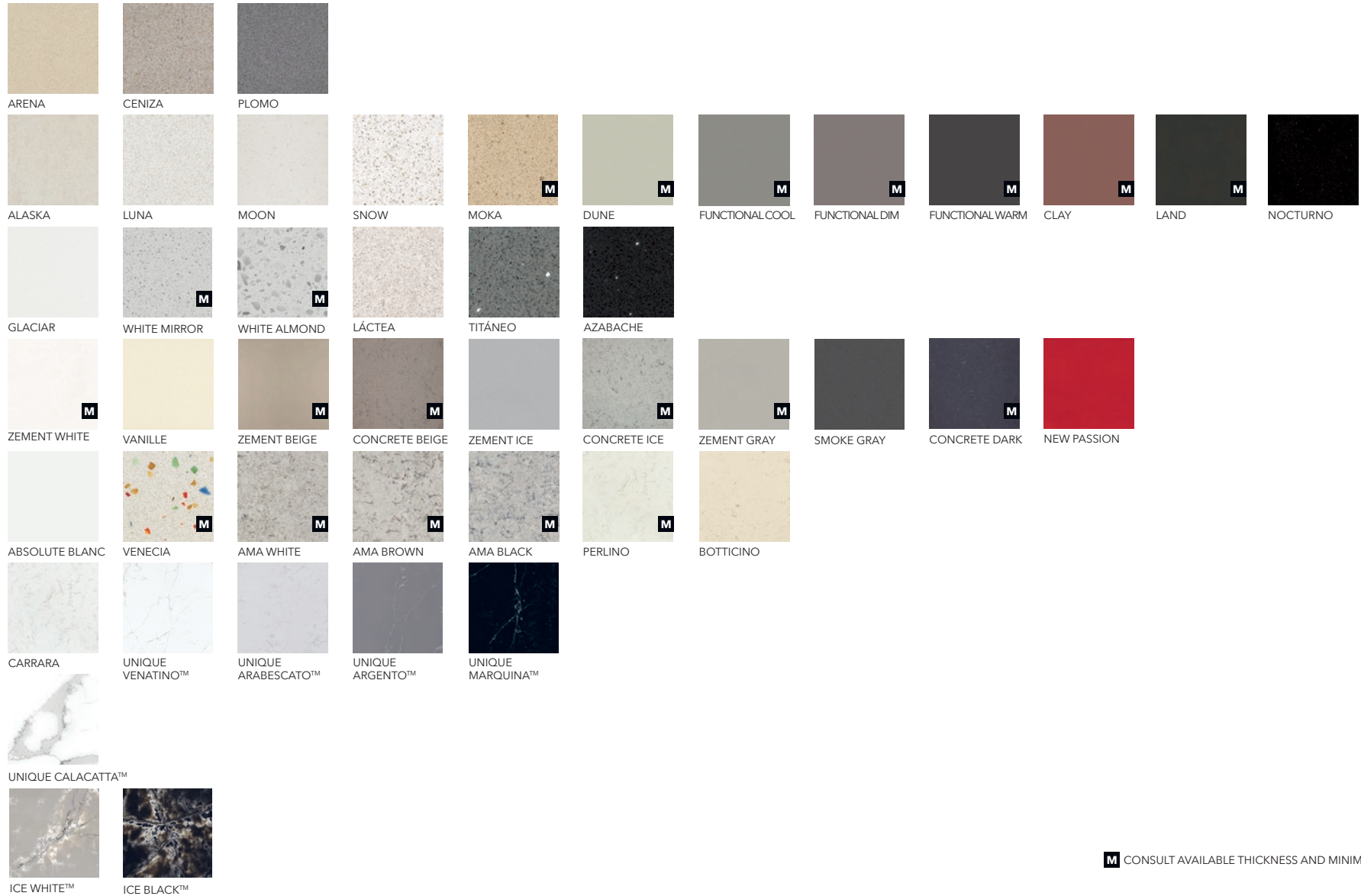


ICE BLACK™

PROJECT DESIGNS

PORTFOLIO INTERNATIONAL

Design - Project



M CONSULT AVAILABLE THICKNESS AND MINIMUM ORDER QUANTITY

Packing List

STD TILE SIZE	THICKNESS	WEIGHT (Kg/SQM)	PIECES x BOX	SQM x BOX	Kg. x BOX	BOXES x PALLET	SQM x PALLET	PALLET WEIGHT	PALLETS x 20' CONTAINER
30x30 cm. (EUROPALLET)	12 mm.	30	10	0,90	27	40	36,00	1.080	22
60x30 cm. (EUROPALLET)	12 mm.	30	5	0,90	27	40	36,00	1.080	22
60x40 cm. (1x1 m)	12 mm.	30	4	1,2	36	28	33,6	1.008	24
60x60 cm. (1x1 m)	12 mm.	30	4	1,44	43,2	28	40,32	1.210	20

SKIRTING PIECES	THICKNESS	WEIGHT (Kg/ml.)	PIECES x BOX	ml. x BOX	Kg. x BOX	BOXES x PALLET	ml. x PALLET	PALLET WEIGHT
60x7 cm. (EUROPALLET)	12 mm.	2,17	15	9,00	20	56	504,00	1.094

STANDAR SLABS X 20' CONTAINER

Thickness 12 mm.	Thickness 20 mm.	Thickness 30 mm.
160	96	64

GIANT SLABS X 20' CONTAINER

Thickness 20 mm.	Thickness 30 mm.
80	60

Cardboard box and wood pallet weights included.
Approximate weight.

Highest Certificates



COMPAC offers "Lifetime Guarantee" on the bathroom countertops kitchen worktops for residential use. The terms, conditions and instructions for registration are in our site www.compac.es.

The guarantee registration form is made automatically completing the data requested by the system, thus facilitating the administration of the guarantee certificate.

GEOGRAPHICAL LIMITATION / CONSULT YOUR DEALER.



ISO 9001

Bureau Veritas SA Certification to COMPAC, that applies to the design, manufacture and marketing of agglomerated stone.

This certification is a valuable asset because it demonstrates our achievements and ongoing commitment to run business in a deeply professional and consistent way.



GREENGUARD

The certificate issued by the Greenguard Environmental Institute ensures that COMPAC products compliant indoor air quality with respect to volatile organic compounds (VOCs). Seals are awarded Greenguard Indoor Air Quality Certified (Certified IAQ) and The Greenguard Children & Schools Certified (Certificate of Schools and Children's Venues), the second is one of the most stringent in the industry.



NSF certification is given by the recognized U.S. agency that acts on the issuance of certificates of health, hygiene and environmental considered COMPAC products safe material for direct contact with all food.



The U.S. Green Building Council (USGBC) is transforming the way we design, build, maintain and operate our buildings, homes and communities.

USGBC is committed to a prosperous and sustainable future through cost-efficient and energy-saving green buildings



Classification of construction products and building elements of fire performance. Certificate for the quartz product range by AFITILICOF Centre of Fire Testing and Research (Association for the Promotion of Research and Fire Safety Technology) according to IMO Resolution A.653 according to IMO Resolution MSC 61 FTPC Code (67).



Alimentary contact certificate All COMPAC Technological Quartz products comply with the European regulation EC 1935/2004 for articles intended to come into contact with food.



Incorporating BIO resins from renewable plant sources is a very important technological advance to the market and benefits the entire distribution channel, especially in the handling by fabricators because of its lower shrinkage and internal stresses, supports better the bending, increases its impact resistance, cracks and cutting fissures, minimizing the slabs' curvature during the storage and, due to its hardness, makes easier the polishing and finishing work.

Inspect before cutting

WORKTOP ELABORATION:

Below is a description of guidelines you should follow when making COMPAC Technological Quartz worktops to ensure maximum quality, avoid claims from clients or incidents during elaboration.

1. VISUAL INSPECTION OF THE PANEL

Remove the protective plastic before inspecting the slab. Before cutting the panel it is recommendable to visually inspect it, looking for possible nonconformities on the panel. Once the slab has been cut, no claims for any of the reasons listed below will be accepted:

- Differences in colour on the same slab (batch number, label identifier).
- Differences in tone from one slab to another, should more than one slab be needed for the complete job.
- Shadows, non-uniform brightness or polishing marks.
- Pores or other surface imperfections.
- Stains or irregularities in the distribution of the quartz elements.
- Thickness outside the tolerance of 1.2mm. Curvature outside the tolerance of 3mm in length and 1.5mm in height.
- Surface fissures or cracks. "Due to the particularities of their manufacturing process and the raw materials used in COMPAC products, these may present slight irregularities in the random distribution of quartz grains, as well as slight imperfections.

If this is the case, it is the responsibility of the marble worker or installer to decide if the slabs showing these anomalies are appropriate for application in each individual case or not." The marble worker or installer should keep a record of the batch No. or Nos. of the slab/s used in each job, as these must be presented in the event of an incident or claim.

2. BASIC RECOMMENDATIONS FOR ELABORATION

To achieve good results in elaborating the worktop, please always bear in mind the following basic recommendations:

- Do not attempt to change the surface finish of the material by repolishing, sealing or pumicing it.
- Always use water-cooled tools to avoid overheating the material being cut.
- Always try to avoid cross cuts, as these may produce fissuring.
- Angle cuts must always be rounded off (minimum radius 1 cm). For internal angles always use a suitable drill to avoid damaging the angle.

*These recommendations pertain to the COMPAC Professional Manual vers.1 201210 point No.2 Manufacturing

COMPAC places at your disposal our Technical Manual for Professionals to ensure that our products are handled with maximum precautions after leaving the factory, to enhance the safety of professionals working with our materials and to guarantee total satisfaction for the end user.

Please ask your sales agent for this document, in which you will find detailed instructions and useful advice to enable you to save time, work more safely and guarantee product quality.



Intructions for care and cleaning

- WHERE SHOULDN'T COMPAC TECHNOLOGICAL QUARTZ BE USED?

Do not place COMPAC Technological Quartz materials in outside locations or in place subject to intense solar radiation, or in places where the product may be exposed to lighting emitting UV rays.

- IS COMPAC TECHNOLOGICAL QUARTZ HEAT RESISTANT?

Yes, it is a heat-resistant product. Nevertheless if you place hot objects taken straight from the stove or oven (frying pans, pots, casseroles, etc.) on these surfaces, they may be irreversibly damaged. Therefore it is recommendable to use mats or cloth over the quartz surface when you need to place hot objects on it. Toasters, fryers and other appliances (built in vitroceramic hobs, dishwashers, etc.) generate heat, so the surface should be protected by ensuring there is sufficient separation for ventilation so that heat can be dissipated.

- IS IT NECESSARY TO APPLY A SEALANT ON THE SURFACE OF COMPAC TECHNOLOGICAL QUARTZ?

No, thanks to its null porosity, no humidity can penetrate the surface, so it is not necessary to use water-repellents or sealants to protect the surface or enhance its gloss, as opposed to other natural stone like marble.

- CAN I CUT DIRECTLY ON COMPAC TECHNOLOGICAL QUARTZ SURFACES OR USE SHARP UTENSILS?

COMPAC Technological Quartz is made from 93-95% natural quartz, one of the hardest and most beautiful minerals in the world. Nevertheless, to ensure its integrity and beauty we recommend avoiding cutting operations directly on the surface. Use an appropriate cutting board when working with knives, sharp utensils or tools.

- WHAT CHEMICAL OR CLEANING AGENTS ARE NOT RECOMMENDABLE FOR USE?

Do not use paint strippers, caustic soda, degreasers, or products with a pH level above 10 or chlorine-based products, such as oven or toilet cleaners, furniture wax, or oily soaps or drine unblocking products. Do not under any circumstances use products containing hydrofluoric acid or dichloromethane. If you use bleach or solvent, this must be diluted with water and never allowed to remain in contact with the surface for long periods of time.

- CAN I RE-POLISH COMPAC TECHNOLOGICAL QUARTZ SURFACES?

No. Under no circumstances should COMPAC TECHNOLOGICAL QUARTZ surfaces be re-polished, either in floor or worktop applications.

- HOW DO I CLEAN AND CARE FOR A SURFACE WITH GLACÉ FINISH?

All COMPAC Technological Quartz products and finishes (Polished and Glacé) have the same quality levels and physical-mechanical properties.

- DO COMPAC TECHNOLOGICAL QUARTZ MATERIALS WITH BIO RESINS OR RECYCLED MATERIALS NEED ANY SPECIAL KIND OF MAINTENANCE?

No. COMPAC supplies several products made using renewable "BIO" plant-origin resins (Carrara, Perlino, Botticino, Unique Calacatta™, Unique Venatino™, Unique Marquina™, Unique Arabescato™ and Unique Argento™. ,) and other products containing a high percentage of recycled materials (crystals): Azabache, Titáneo, Láctea and Venecia. All of these have the same quality levels and only require the same care and maintenance as other products.

- IS COMPAC TECHNOLOGICAL QUARTZ A SAFE/HYGIENIC MATERIAL?

Yes. All our Technological Quartz products are certified and approved for home use by official certifying bodies in each of the countries where COMPAC products are sold. We have a GREENGUARD Indoor Air Quality certificate, which means that our products contribute to a healthier indoor atmosphere, giving off no volatile emissions, and a GREENGUARD Childrens & Schools certificate that guarantees the safety of our products in schools and other buildings where children spend substantial periods of time. The NSF also certifies that our products transmit no contaminating chemical elements to food or foodstuffs when they come into direct contact with COMPAC surfaces.

- DO COMPAC TECHNOLOGICAL QUARTZ PRODUCTS CONTAIN ANTIBACTERIAL AGENTS?

No. The zero porosity of our material prevents the formation of mould, mildew and bacteria. Therefore, it is not necessary to incorporate chemical agents in our products to prevent bacterial growth. We maintain that COMPAC Technological Quartz products are natural antibacterial materials.



If you need to ask any further questions about our products, email us at: calidad@compac.es

HERE ARE A FEW OF OUR MOST IMPORTANT RECOMMENDATIONS:

- Always use water-cooled cutting tools (Never dry cut)
- Always ensure adequate ventilation/extraction systems.
- Perform regular cleaning (vacuuming, wet methods). Do not sweep or use cleaning tools or machinery that raise dust.
- Integral safety and hygiene management (health monitoring, ongoing training, information...)
- Use Respiratory Protection Equipment with particle filter type P3.

As Quartz is silica glass, COMPAC makes available information regarding the characteristics of and guidelines for the use of the product.

Procedures for correct cutting and handling are available directly

from our website, can be requested from your sales representative or directly from our Health & Safety Department via the following e-mail: prevencion@compac.es

Please note in all cases the user is responsible for the proper handling of COMPAC products

www.compac.es



COMPAC
THE SURFACES COMPANY

compac.us
compac.es

[SPAIN](#) [PORTUGAL](#) [UNITED STATES OF AMERICA](#) [UNITED KINGDOM](#) [BELGIUM](#) [SINGAPORE](#) [UNITED ARAB EMIRATES](#)

COMPAC
THE SURFACES COMPANY